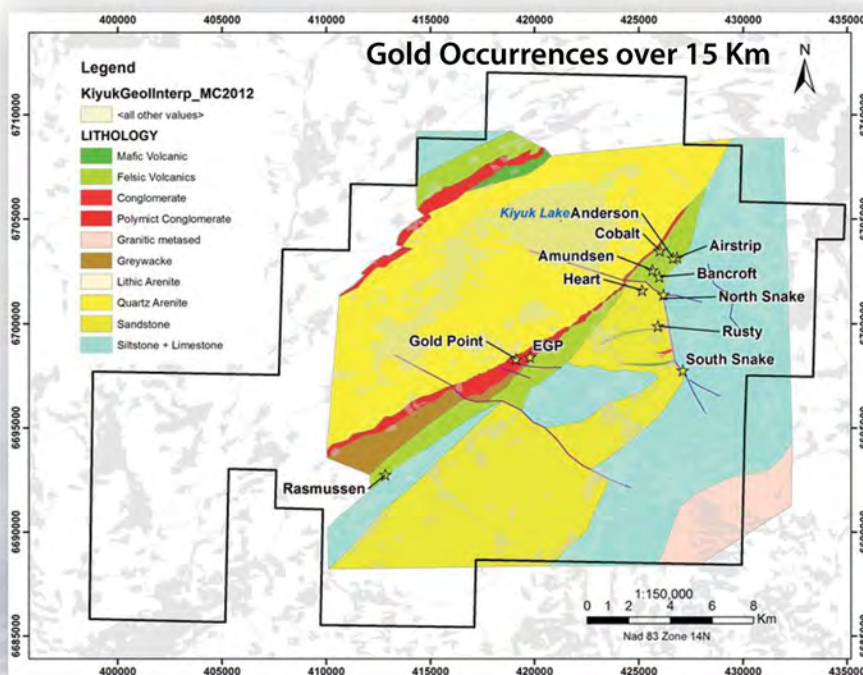


CACHE

exploration

Exploring for Near-Surface Gold in Nunavut

- A true district play covering a majority of Proterozoic Kiyuk Basin
- Multiple Gold Intercepts over 3g/t
- Significant expansion possible:
 - Five new target areas identified and ready for drilling
 - Many parts of main trend untested
- Drill Ready
 - Fuel, drills and 35-man camp on site and ready for spring drilling



12,000 Meter Drill Database (2008-2013)

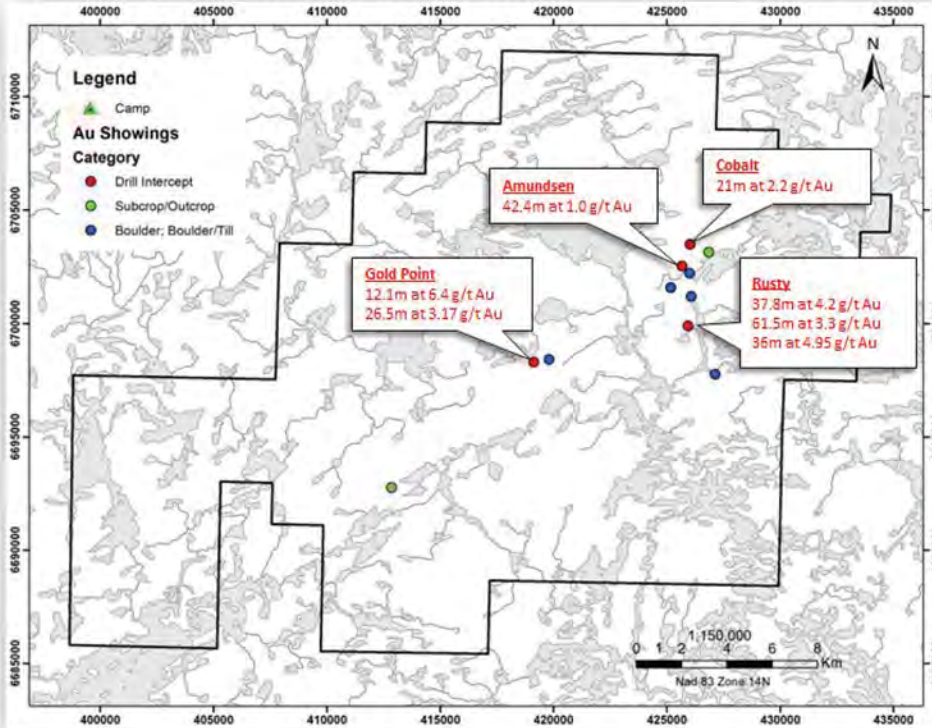
Year	Company	# of Holes Drilled	Meters
2008	Newmont	15	2,331
2011	Prosperity Goldfields	14	2,300
2012	Prosperity Goldfields	12	2,665
2013	Prosperity Goldfields	20	4,426
Total		61	11,722

Share Structure

Issued and Outstanding	26,494,044
Options	1,500,000
Fully Diluted	27,994,044

Exploring for Near-Surface Gold in Nunavut

Four Separate Mineralized Zones



Assay Highlights* (0.5 g/t Au cutoff)

Hole KI13-001 (0.5 g/t Au cutoff)

- 35.9m at 4.94 g/t Au from 134.1m

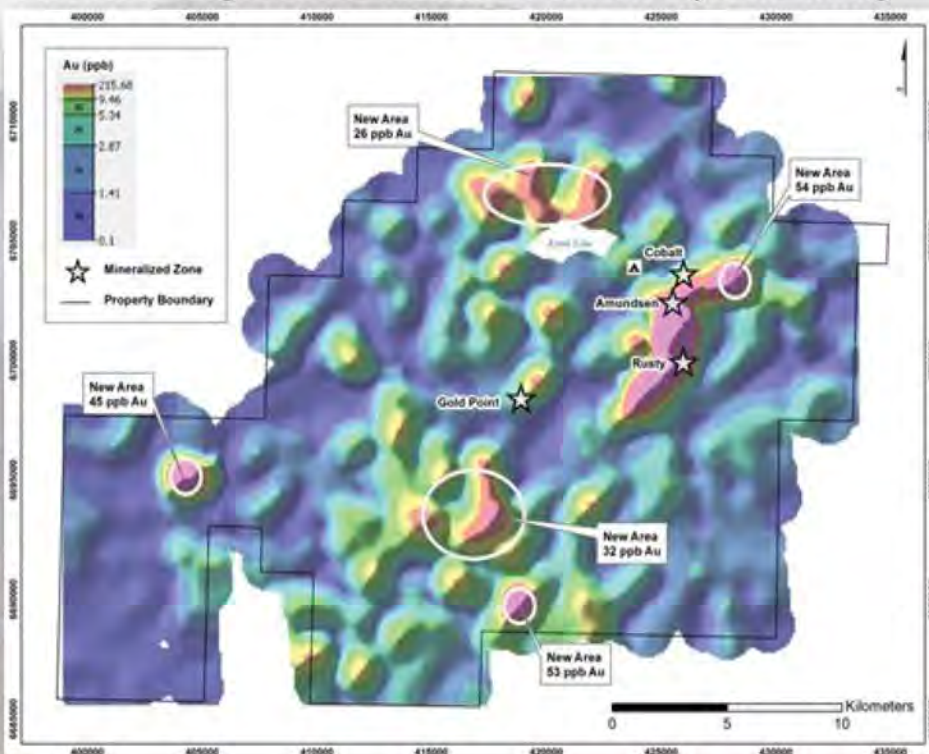
Hole KI13-004 (0.5 g/t Au cutoff)

- 24.1m at 3.40 g/t Au from 34.0m
- 28.0m at 1.53 g/t Au from 66.0m
- 8.0m at 8.24 g/t Au from 168.0m
- 30.0m at 2.87 g/t Au from 224.0m

**Hole 4 averaged 1.6 g/t Au over 249.8m from 8.2m at a 0.0 g/t Au cut-off.*

- Open at depth and to the east
- Requires infill drilling to define a resource
- Further drilling is warranted to the west and east of the main mineralized core

Five New Target Areas Identified and Ready for Drilling



Management

Jack Bal, CEO / Director

Resource pubco veteran. Extensive experience in capital markets, management, public relations and marketing. Raised over \$50M.

Chris Pennimpede, VP Exploration and Director

Project geologist for the Kiyuk Lake property. Led several successful gold and copper exploration projects in Yukon, Nunavut and Alaska.

Ian Graham, Independent Director

Career mining professional with over 20 years of experience in the development and exploration of mineral deposits, formerly with Rio Tinto and Anglo American.

Dean Pekeski, Independent Director

Professional Geologist with over 20 years' experience in mineral exploration and project development. Formerly with Rio Tinto and Western Potash Corp. Currently VP – Project Development, Crystal Peak Minerals.

Cathy Hu, CPA, CGA, CFO

Working as CFO for public resource companies since 2009.

QUALIFIED PERSON

Technical aspects of this Fact Sheet have been reviewed and approved by the Qualified Person, Christopher Pennimpede P. Geo., hereby designated as a QP under National Instrument 43-101.

FORWARD-LOOKING STATEMENT

This Factsheet may include certain forward-looking information within the meaning of applicable Canadian securities laws concerning the future performance of Cache Exploration Ltd's business, its operations and its financial performance and condition, as well as management's objectives, strategies, beliefs and intentions. Forward-looking information is frequently identified by such words as "may", "plan", "expect", "anticipate", "estimate", "intend" and similar words referring to future events and results. Forward-looking information is based on the current opinions and expectations of management. All forward-looking information is inherently uncertain and subject to a variety of assumptions, risks and uncertainties, including the speculative nature of mineral exploration and development, fluctuating commodity prices, changes in exchange rates, competitive risks, changes in project parameters as plans continue to be refined and the availability of financing, all as described in detail in any recent securities filings available at www.sedar.com. Please refer to our website www.cacheexploration.com for a full disclaimer.